

THIS DOCUMENT IS THE PROPERTY OF FEC HELIPORTS, A DIVISION OF FEDERAL EQUIPMENT COMPANY, CINCINNATI OHIO. INFORMATION CONTAINED ON THIS DOCUMENT SHALL NOT BE DISCLOSED TO OTHERS, USED FOR MANUFACTURING, OR REPRODUCED FOR ANY REASON WITHOUT THE EXPRESSED WRITTEN PERMISSION OF FEC HELIPORTS, A DIVISION OF FEDERAL EQUIPMENT COMPANY.

REVISION BLOCKS

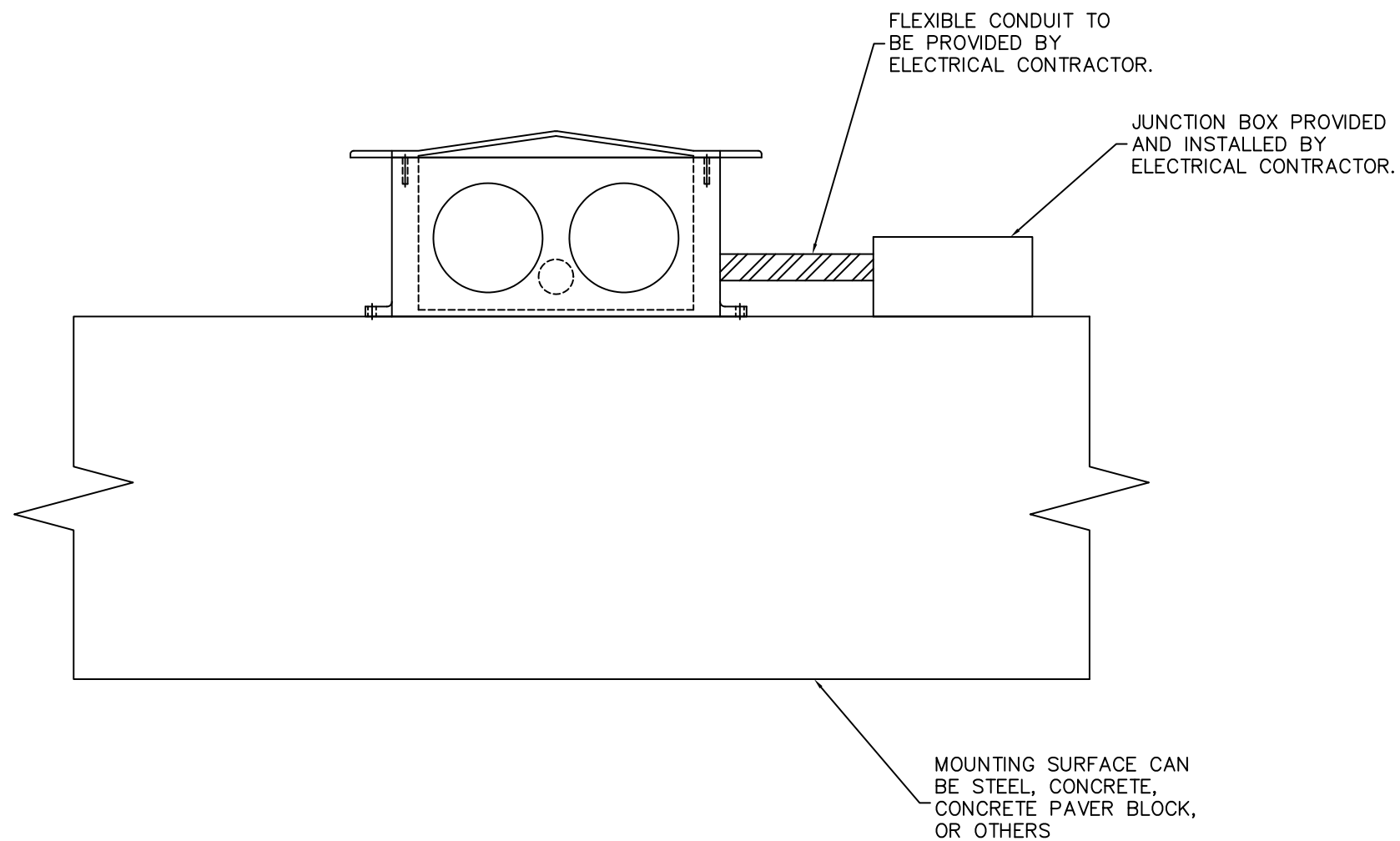
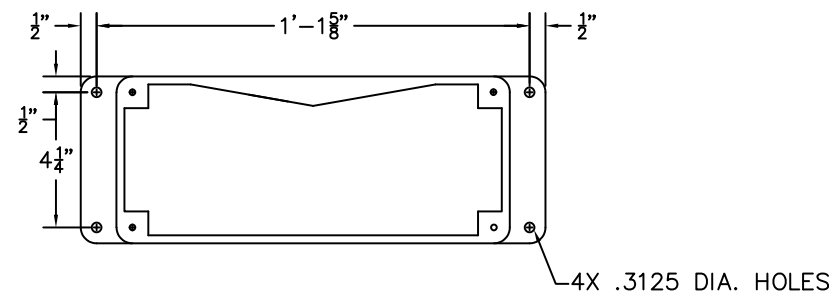
REVISION:	DATE:	DESCRIPTION OF RESIVIONS & ADDITIONAL NOTES:	REVISED BY:
*	**/**/**	*	***

NOTES:

- 1) (3) 16 GAUGE WIRES
 - (1) BLACK
 - (1) WHITE
 - (1) GROUND

2) 1" NPT LOCATED ON BACK OF FLOODLIGHT

3) 180 W, 120 V, 1 ϕ



ITEM	QTY	DESCRIPTION	MATERIAL	PART NO.
3	1	FLOODLIGHT GASKET	*	HP0364
2	2	150 W FLOODLIGHTS	*	HP0807-10
1	1	BASE TO HOOD GASKET	*	HP0349

PARTS LIST



A Division of
Federal Equipment Company.
707 Carr St.
Cincinnati, Ohio 45203
(513) 621-5260
(513) 621-0524 Fax
www.FECHeliports.com

MOUNTING DRAWING FOR
HOODED SURFACE FLOODLIGHTS
FEC PART NO. HP0335

DRAWN BY JDB	CHECKED BY: TS	APPROVED BY: ***
DATE: 12/21/05	DWG SIZE: B	REV LTR: —
SCALE: 1" = 1"	HP0335-M	