

THIS DOCUMENT IS THE PROPERTY OF FEC HELIPORTS, A DIVISION OF FEDERAL EQUIPMENT COMPANY, CINCINNATI OHIO. INFORMATION CONTAINED ON THIS DOCUMENT SHALL NOT BE DISCLOSED TO OTHERS, USED FOR MANUFACTURING, OR REPRODUCED FOR ANY REASON WITHOUT THE EXPRESSED WRITTEN PERMISSION OF FEC HELIPORTS, A DIVISION OF FEDERAL EQUIPMENT COMPANY.

REVISION BLOCKS

REVISION:	DATE:	DESCRIPTION OF RESISIONS & ADDITIONAL NOTES:	REVISED BY:
*	**/**/**	*	***

TYPICAL POLE MOUNTED LIGHT HP0206P, HP0207P, AND HP0182P

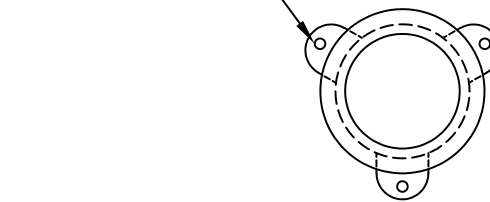
NOTES:

- 1) (3) 16 GAUGE WIRES
 - (1) BLACK
 - (1) WHITE
 - (1) GROUND

- 2) 1" NPT LOCATED ON SIDE OF GROUND STYLE AND BOTTOM OF POLE STYLE

- 3) 69 W, 120V, 1Ø

5/16 DIA. HOLE ON A 5 1/2 B.C., (3) PLACES AS SHOWN



TYPICAL LIGHT SURFACE MOUNTED, HP0206G, HP0207G, AND HP0182G

RIGID CONDUIT TO BE PROVIDED BY ELECTRICAL CONTRACTOR. OVERALL HEIGHT TO MEET FAA GUIDELINES.

FLEXIBLE CONDUIT TO BE PROVIDED BY ELECTRICAL CONTRACTOR.

JUNCTION BOX TO BE PROVIDED AND INSTALLED BY ELECTRICAL CONTRACTOR.

GROUND STYLE OBSTRUCTION LIGHTS OR PERIMETER LIGHTS

POLE STYLE

MOUNTING SURFACE CAN BE STEEL, CONCRETE, CONCRETE PAVER BLOCK, OR OTHERS

JUNCTION BOX TO BE PROVIDED AND INSTALLED BY ELECTRICAL CONTRACTOR.

MOUNTING SURFACE CAN BE STEEL, CONCRETE, CONCRETE PAVER BLOCK, SAFETY NETTING OR OTHERS

ITEM	QTY	DESCRIPTION	MATERIAL	PART NO.
7	1	LIGHT GLOBE, AMBER		HP0112
6	1	LIGHT GLOBE, AVIATION GREEN		HP0267
5	1	LIGHT GLOBE, RED		HP0113
4	1	SQUEEZE CLAMP		HP0108
3	1	LIGHT BULB, 69 W 8000 HR		HP0239
2	1	GASKET, GLOBE/BASE		HP0114
1	1	LIGHT BASE, GROUND STYLE		HP0105
1	1	LIGHT BASE, POLE STYLE		HP0103

PARTS LIST



A Division of Federal Equipment Company.
707 Carr St.
Cincinnati, Ohio 45203
(513) 621-5260
(513) 621-0524 Fax
www.FECHeliports.com

MOUNTING DETAILS FOR OBSTRUCTION LIGHTS AND PERIMETER LIGHTS
FEC PART NUMBERS: HP0182P, HP0182G, HP0206P, HP0206G, HP0207P, AND HP0207G

DRAWN BY: JDB	CHECKED BY: ***	APPROVED BY: ***
DATE: 12/21/05	DWG SIZE: B	REV LTR: —
SCALE: 1" = 1"	*****	